

SensMax Agent Software

User's manual

Table of contents

Introduction	3
SensMax Agent software installation	3
SensMax Agent software review	5
Settings tab	5
FTP server settings	6
Local and network directory settings	7
Saving the settings.....	7
Log tab	7
Sensor List tab	8
Adding new sensor	8

Introduction

The SensMax Agent software is meant to transfer the SensMax visitor counter data to a remote location specified by a client. The data transfer is performed via an FTP server as well as via a local or a remote directory.

The software may cooperate with a PC-connected data collector using USB HID interface.

The SensMax Agent is used to perform the data collection and submission, counter settings administering, as well as adding/removing new counters from the system.

The software should be installed at the same location where the counters are being installed.

SensMax Agent software installation

It is recommended to pre-install .NET Framework v2.0 for the correct software operation.

Run the software installation.

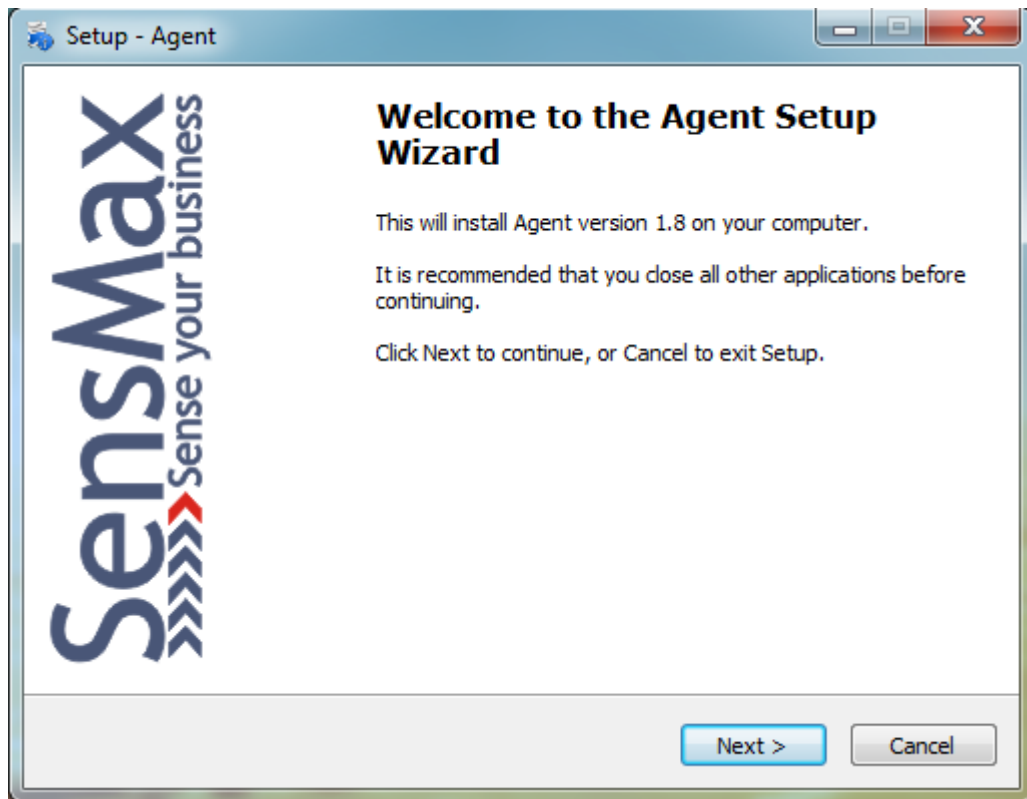


Fig. 1.

Push **Next** to continue and wait till the installation is complete.

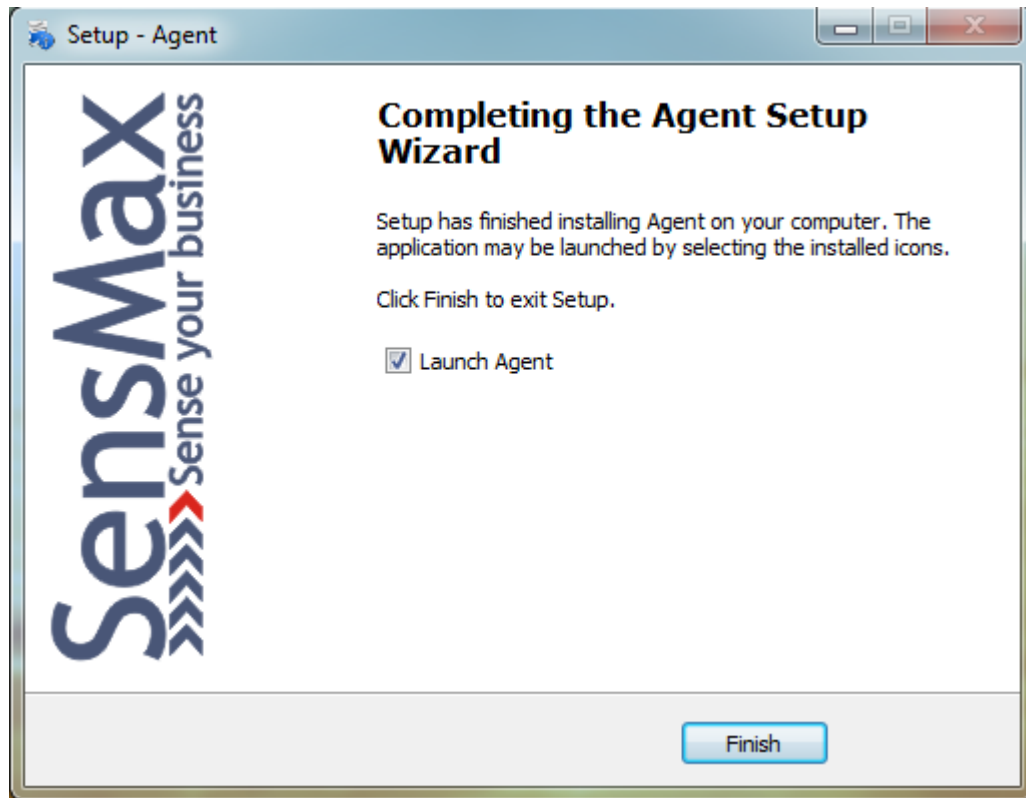


Fig. 2.

To end the installation, click Finish.

Note: if the Launch Agent box is ticked, the software runs immediately after the successful installation.

To operate successfully, the software should be run permanently. It is launched automatically when Windows starts.

After the software launch, the following item appears in the tray:



Fig. 3.

Double-click the icon to open the software primary window.

SensMax Agent software review

The software primary window is shown in Fig. 4.

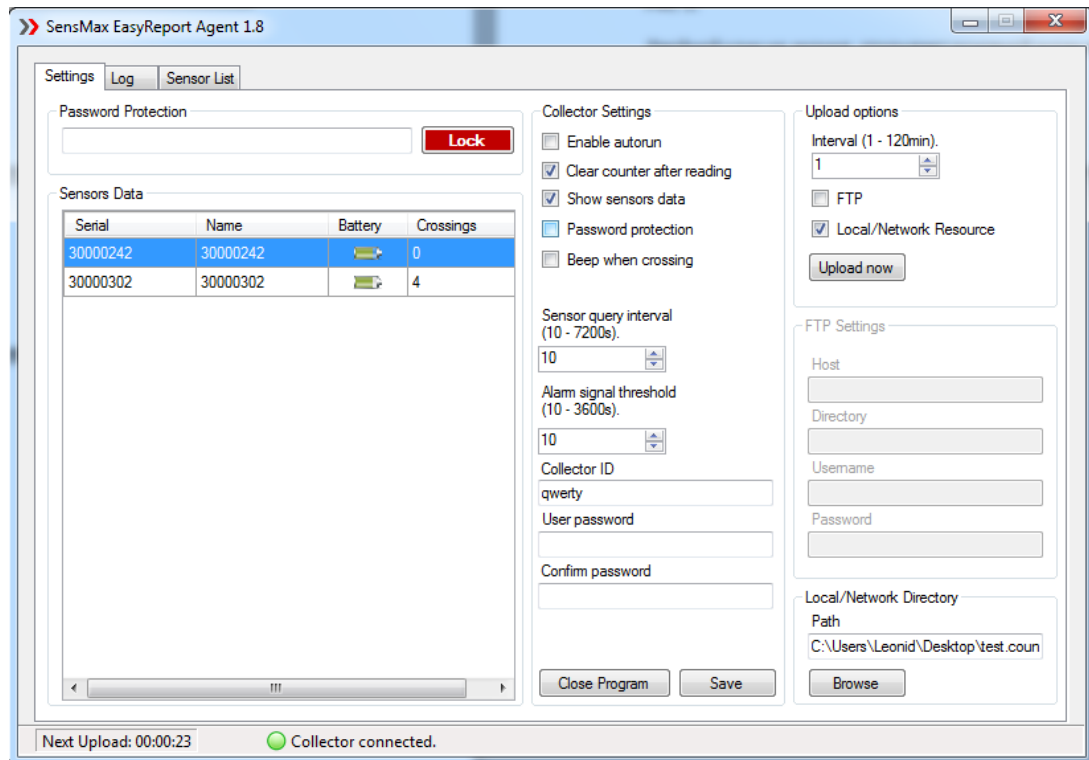


Fig. 4.

The primary window contains 3 tabs (Settings, Log, and Sensor List).

Settings tab

In this tab, all the counter and software operation settings are located. All the settings are described in the table below:

Settings	Description
Sensor data	List of active counters
Enable autorun	Run the software automatically when Windows starts
Clear counter after reading	Automatic counter memory cleaning after successful data reading
Show sensor data	Show the traverse number for the current day in the "Crossings" field
Password protection	Protect settings by password
Beep when crossing	Provide a sound signal at a traverse
Sensor query interval	Sensor query interval. Recommended value - 900 seconds.
Alarm signal threshold	Error report delay in case of sensor blockage. Recommended value - 900 seconds.
Collector ID	Export file name. Usually - a store name.
User password	Unblock the software with a user password.
Confirm password	User password confirmation.
Upload Interval	Data upload interval for the resource specified. Recommended value - 15 minutes.
FTP	Activate data transfer to the FTP server.
Local/Network Resource	Activate data transfer to the local/network resource.

In the Sensor Data window, currently active counter list is displayed. Each counter may be renamed. This may be necessary to ease the specified store recognition in the main software (SensMax EasyReport).

To rename a counter, double-click in the Name field and enter a name (Fig. 5.).

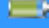

Sensors Data			
Serial	Name	Battery	Crossings
30000242	my shop name		0
30000302	30000302		15

Fig. 5.

FTP server settings

Collector ID (a file name) should be specified. Usually, it is a name of a store where counters have been installed.

To arrange the correct data transfer to the FTP server, it is necessary to enter settings. Tick the FTP box to unblock the settings.

All fields are mandatory.

Capitalization matters, too. Server name is entered without an <ftp://> prefix (Fig. 6.)

Upload options

Interval (1 - 120min).

☒ FTP
☒ Local/Network Resource

Upload now

FTP Settings

Host

Directory

Username

Password

Local/Network Directory

Path

Browse

Fig. 6.

Local and network directory settings

Collector ID (file name) should be specified. Usually, it is a name of a store where counters have been installed.

Tick the Local/Network Resource box. Click **Browse** button to specify a directory.

Saving the settings

When all the settings are complete, click **Save** button, then press **Lock** button.

Log tab

In this tab, the software operation log is displayed (Fig. 7).

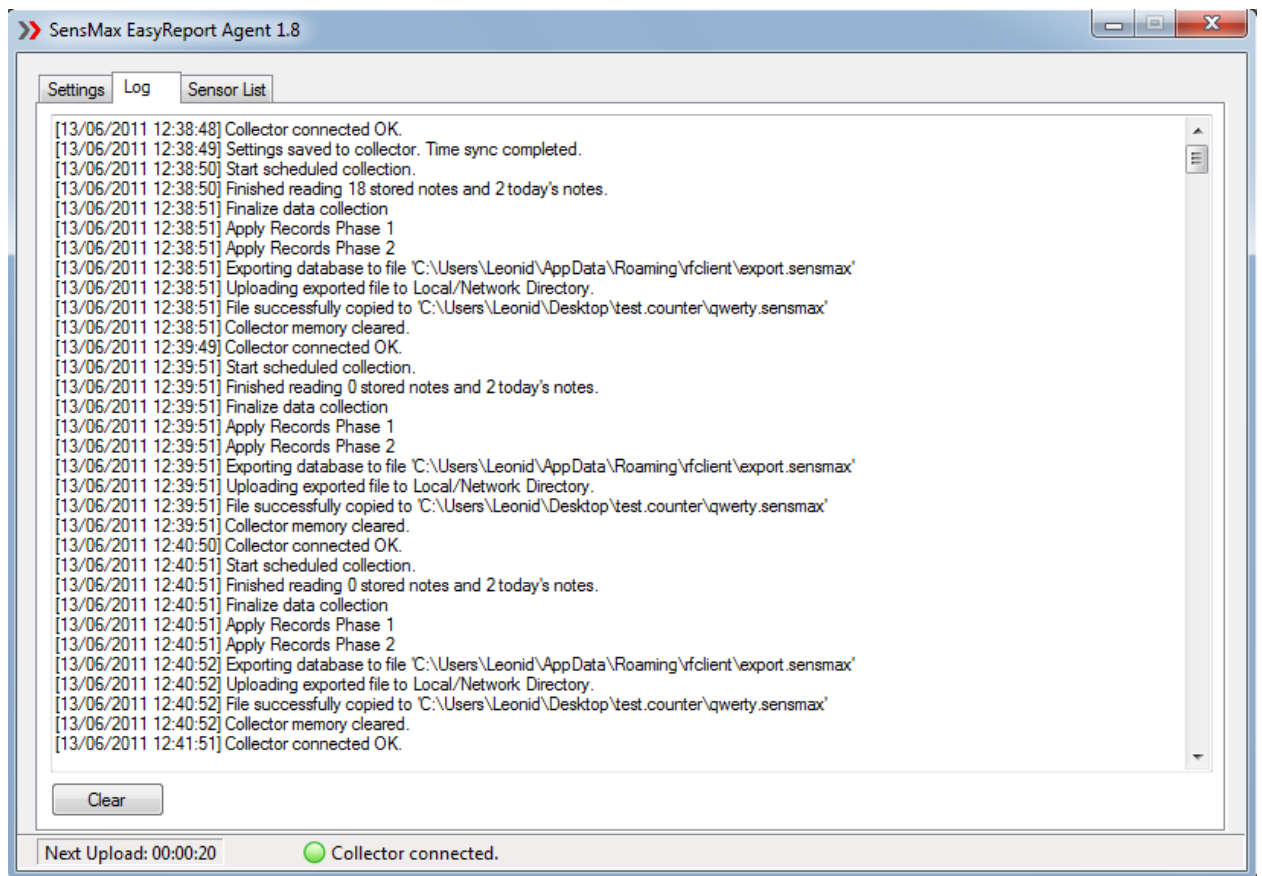


Fig. 7.

Sensor List tab

In this tab, the connected counters may be administered.

Each counter has a unique serial number. Every user needs to fill the counter serial numbers in the system. This is necessary in order to provide the user with the relevant data and to restrict access to other counters.

To fill in the serial number, access within the counter itself should be established. This is a protective measure that inhibits unauthorized personnel from dismantling and disassembling your counter.

Adding new sensor

To add a new counter, go to the Sensor List tab (Fig. 8).

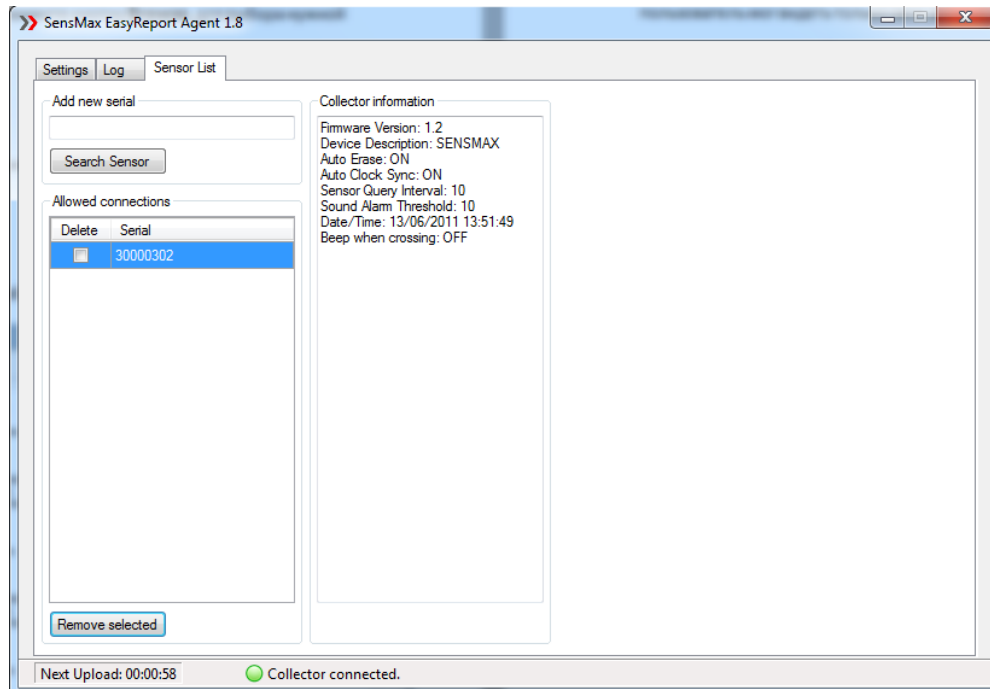


Fig. 8.

Enter your counter's serial number in the **Add new serial** field. The serial number is printed on the counter's body frame. All 9 digits should be entered. Push the **Search sensor** button (Fig. 9).

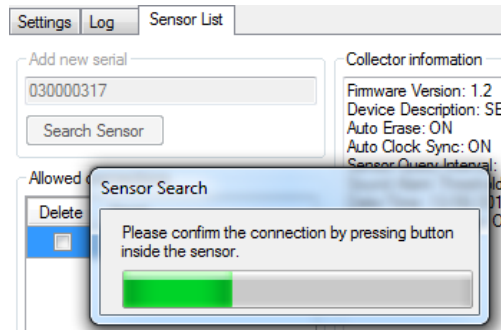


Fig. 9.

The software begins searching for a new sensor. Connection needs to be confirmed by pushing the button **INSIDE THE COUNTER**.

If everything is done right, the new counter is added in the allowed connections list (Fig. 10).

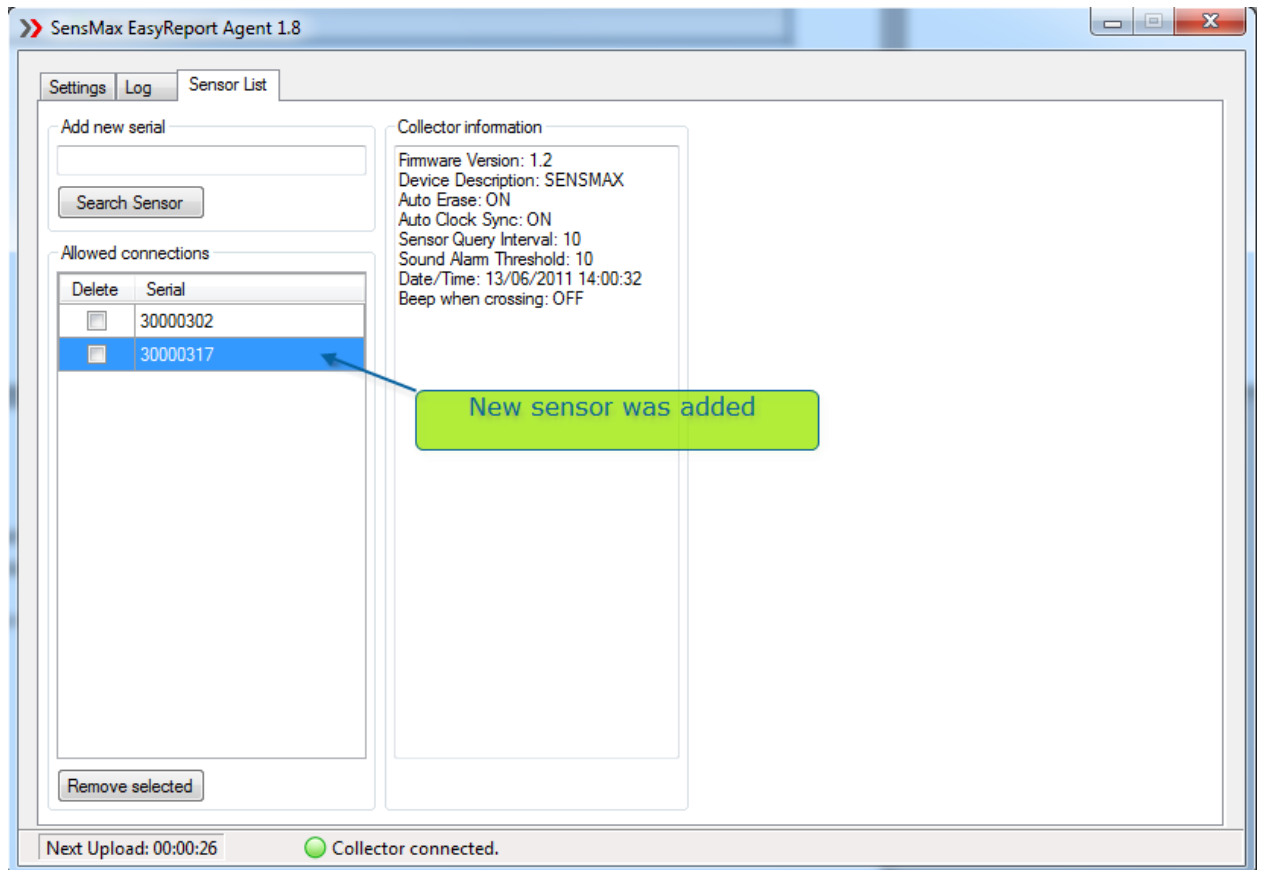


Fig. 10.

Besides that, counters may be removed from the allowed list.

In order to remove counters, tick boxes over against specified counters and press **Remove selected**.